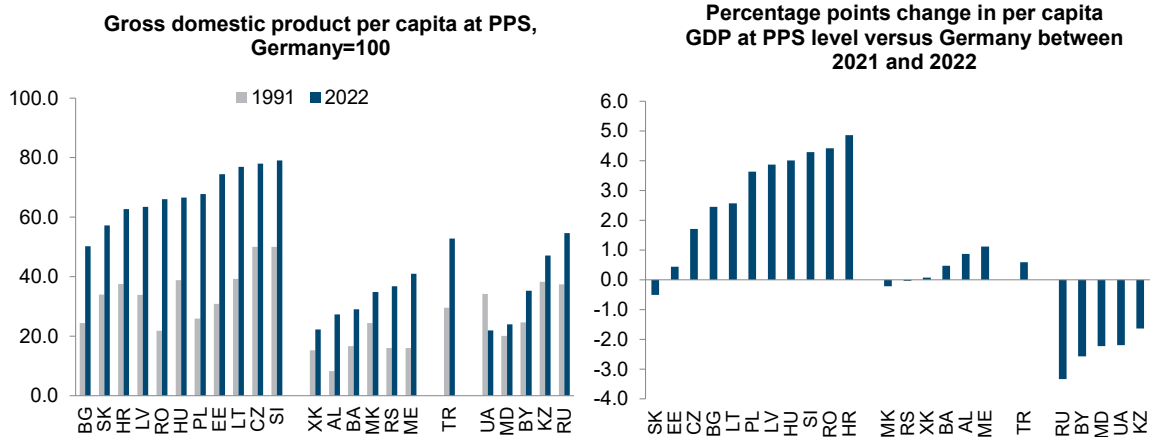


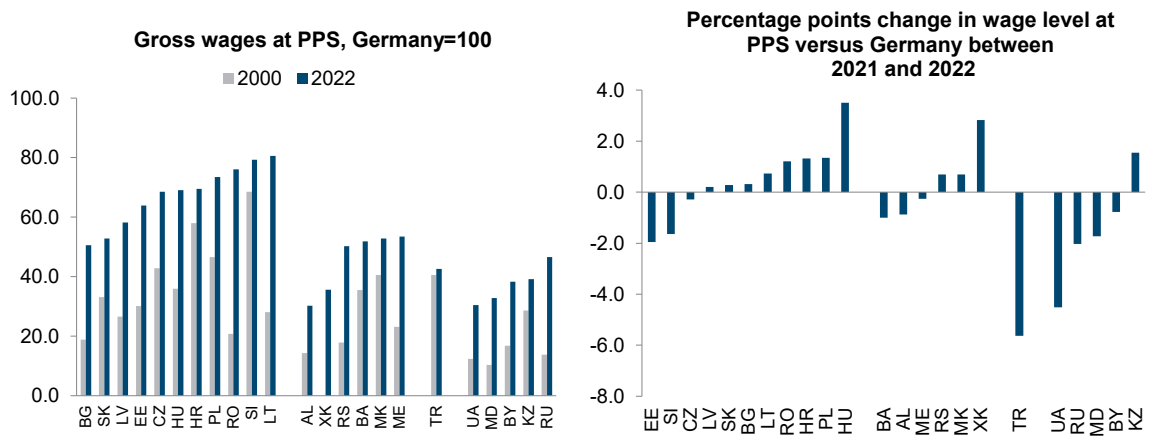
4. Convergence Monitor

BY ALEXANDRA BYKOVA AND BEATE MUCK

Figure 4.1 / GDP per capita and gross wages per employee at PPS convergence against Germany



Note: Data 1991 for BA and XK refer to 2000, for ME and RS to 1995.
Source: wiiw Annual Database incorporating national statistics and Eurostat.



Note: Gross wages are based on administrative data. Lithuanian and Romanian wages include employers' social security contributions. Turkey wages: personnel costs.
Source: wiiw Annual Database incorporating national statistics and Eurostat.

Table 4.1 / CESEE GDP per capita and gross wages per employee at PPS, 2022

	BG	CZ	EE	HR	HU	LT	LV	PL	RO	SI	SK	EU-CEE
GDP per capita	20,680	32,060	30,620	25,810	27,380	31,620	26,110	27,890	27,190	32,540	23,550	27,670
Gross wages	18,020	24,423	22,793	24,780	24,633	28,712	20,762	26,186	27,092	28,254	18,819	24918

	AL	BA	BY	KZ	MD	ME	MK	RS	RU	TR	UA	XK	non-EU
GDP per capita	11,230	11,930	14,520	19,400	9,860	16,860	14,340	15,130	22,460	21,710	9,030	9,170	19,740
Gross wages	10,785	18,472	13,657	13,954	11,708	19,060	18,845	17,910	16,607	15,169	10,849	12,706	15,424

Note: Gross wages are based on administrative data. Lithuanian and Romanian wages include employers' social security contributions. Turkey wages: personnel costs.

Source: wiiw Annual Database incorporating national statistics and Eurostat.

Table 4.2 / CESEE GDP per capita and gross wages per employee in EUR, 2022

	BG	CZ	EE	HR	HU	LT	LV	PL	RO	SI	SK	EU-CEE	
GDP per capita	12,400	25,870	27,170	17,240	17,580	23,590	20,720	17,310	15,040	27,980	19,590	18,300	
Gross wages	10,803	19,712	20,220	16,559	15,817	21,425	16,476	16,251	14,988	24,287	15,648	16,381	14,958

	AL	BA	BY	KZ	MD	ME	MK	RS	RU	TR	UA	XK	non-EU
GDP per capita	6,500	6,830	7,490	10,680	5,270	9,370	7,060	8,920	14,430	10,140	4,360	5,030	11,300
Gross wages	6,241	10,571	7,051	7,680	6,255	10,596	9,277	10,555	10,672	7,086	5,243	6,960	8,939

Note: Gross wages are based on administrative data. Lithuanian and Romanian wages include employers' social security contributions. Turkey wages: personnel costs.

Source: wiiw Annual Database incorporating national statistics and Eurostat.